

Stewardship Report to the Federal Community

2005-2006 Combined Federal Campaign of the National Capital Area

Dear Colleagues and Friends:

Winston Churchill once said, “We make a living by what we get, we make a life by what we give.” If that is true, Federal employees across the Washington Metropolitan Area have made incalculable contributions to their own lives and to those of the most vulnerable people among us. Thanks to these tireless public servants, the Combined Federal Campaign of the National Capital Area (CFCNCA) remains the largest and most successful employee workplace giving campaign in the world. Charities in our own backyard, across the country, and around the world will share in the record-breaking \$57,619,829 in pledges made by those in civil service, the postal service, and the military in the 2005 campaign.

Last year, the CFCNCA had its third straight year of unprecedented growth for a campaign of this magnitude, adding thousands of new donors and increasing total dollars. CFCNCA received pledges totaling \$57.6 million, making it the largest campaign in the history of the CFC program. This is the highest total ever pledged to an individual campaign and amounted to a 3 percent increase, or \$1.6 million new dollars raised, over 2004 pledges to CFCNCA. The average donor’s gift increased 2.9 percent, from \$336 in 2004 to \$346. The CFCNCA participation has been climbing counter to the national trend although growth cooled in 2005. Over the last three years, there are more than 6,500 new donors to the campaign. More than 47 percent of area Federal employees supported charities that aid people who really need help (compared with a 32 percent rate nationally).

CFCNCA is stronger than ever, a welcome message for the participating charities and the individuals they serve. Your overwhelming generosity and support for those you help, but may never meet, make you true Everyday Heroes.

On behalf of the Local Federal Coordinating Committee, more than 3,200 charities designated in the last campaign, and the millions of people benefiting from your helping hand, thank you for being a CFCNCA Hero!

Sincerely,

Vince Micone

Chairperson
Local Federal Coordinating Committee

2005 Stewardship Report

- What is the CFCNCA?
- Largest CFC Campaigns
- 2005 Results
- Distribution to Charities
- Accountability and Regulatory Compliance
- Where Did the Money Come From?
- Awards and Recognition
- Where Did the Money Go?
- Top 25 Charities in CFCNCA
- 2006 Campaign

What is the CFCNCA?

The Combined Federal Campaign of the National Capital Area (CFCNCA) is the largest and most successful charitable workplace giving campaign in the Nation, accounting for more gifts in the Washington Metropolitan Area alone than the employee giving programs at the largest U.S. corporations. In total, giving by Federal employees in this region far outpaces employee workplace giving by workers in the private sector by almost two to one—\$57.6 million to \$20.3 million.¹

The CFC is the only authorized solicitation of employees in the Federal workplace on behalf of charitable organizations. The purpose of the CFC is to support and promote philanthropy through a program that is employee-led, cost-efficient, and effective in providing all Federal employees an informed opportunity to give and to improve the quality of life for all.

Nationally, Federal employees pledged \$268.5 million to charities participating in the CFC. The campaign in the Washington Metropolitan Area represents more than 21.5 percent of all contributions nationwide. See below for the top CFC campaigns nationwide.

Largest CFC Campaigns, 2005

Area	Contribution²
CFC of the National Capital Area	\$57,619,829
Overseas CFC	\$16,005,071
Hawaii-Pacific Area CFC	\$6,117,600
CFC of Central Maryland	\$6,039,358
San Diego County CFC	\$5,981,813

¹ Salmon, Jacqueline L., "United Way Official Resigns, Alleges Inflated Numbers," *washingtonpost.com*, May 22, 2006, B01.

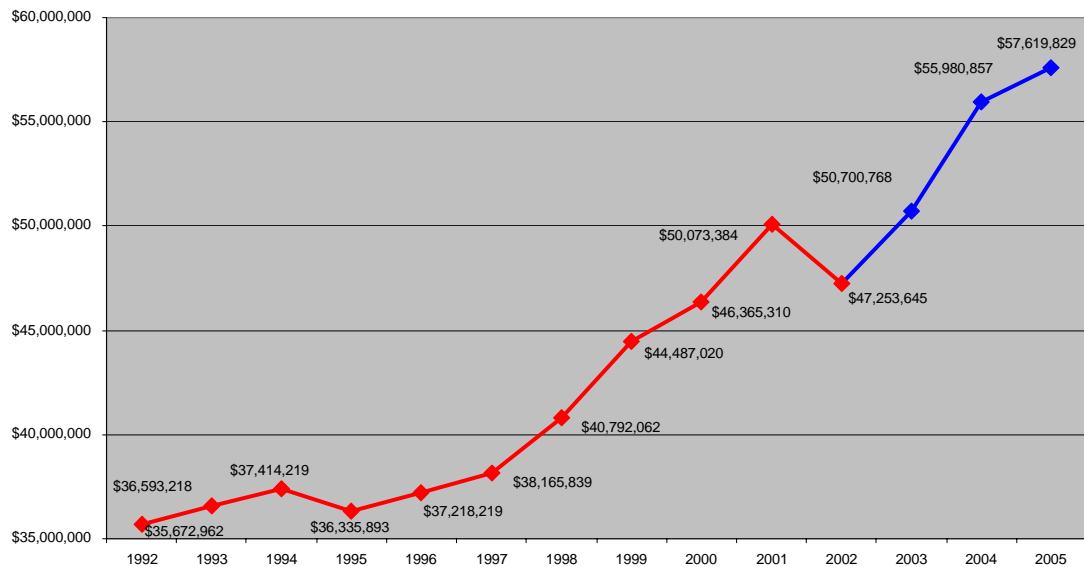
² These amounts per OPM's release of the 2005 Combined Federal Campaign official results on May 11, 2006.

South Hampton Roads CFC	\$5,461,902
San Antonio Area CFC	\$5,200,230
Metropolitan Atlanta CFC	\$4,546,647
San Francisco Bay Area	\$4,414,228
Chicago Area CFC	\$4,309,553
Greater Los Angeles Area CFC	\$3,949,792
Metropolitan Denver CFC	\$3,692,669
Metropolitan Detroit	\$3,382,947
UW of Greater St. Louis	\$3,167,793

2005 Results

The remarkable amount of total dollars raised this year and efforts to strengthen the CFCNCA have resulted in strong and steady progress.

CFCNCA Campaign History 1992-2005

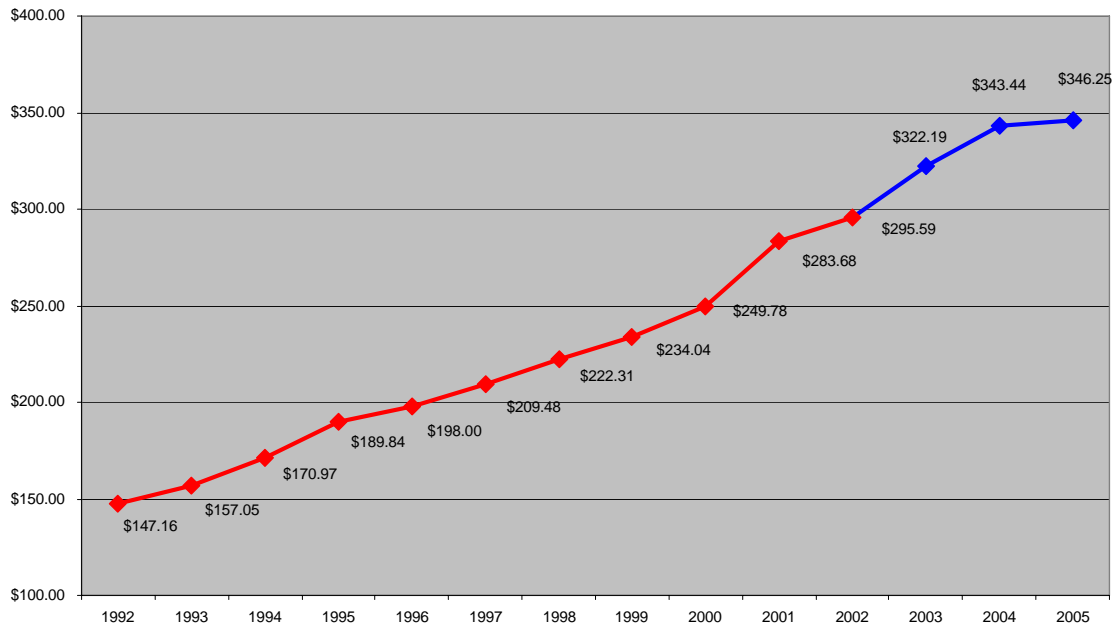


More than 166,410 military, civilian, and postal employees out of the 353,000-member workforce contributed to the campaign.

Members of the military services have the highest percent of participation (60 percent), ahead of civilian employees (44 percent) and postal workers (36 percent).

The campaign experienced another increase in the average gift. The average gift of \$346.25 is up from \$335.97 in 2004, an increase of 2.9 percent.

CFCNCA Average Gift, 1992-2005



Distribution to Charities

The generosity of Federal employees will be most welcome by the 3,221 local, national, and international charities that received critical funding from CFCNCA.

Charities and federations have been notified of their designations and the portion of the undesignated funds they will receive over the next year. CFCNCA also released the names of any contributors who authorized release to charities.

Payment of campaign pledges is made monthly based on actual cash received. The Principal Combined Fund Organization (PCFO), the administrator of the campaign, deducts campaign costs and uncollected pledges approved by the Local Federal Coordinating Committee (LFCC). (The PCFO for CFCNCA is Global Impact.) Campaign costs are estimated at less than 7 percent. Uncollected pledges represents the amount by which pledged donations decrease due to employees leaving their jobs, retiring, or other unanticipated reasons. Payment began in April 2006 and will be made monthly thereafter with the final payment for the 2005 campaign in March 2007.

For charities that received less than \$5,000 in pledges, a one-time distribution, less estimated uncollected pledges and campaign costs, was made in April 2006. Based on actual collections, a final adjustment will be made at the end of the distribution cycle if the campaign collects more than expected.

Accountability and Regulatory Compliance

Continued strong oversight by the LFCC and efforts by the PCFO will assure that the CFCNCA is conducted with transparency, accountability, and full adherence to the spirit and the letter of the regulations governing the campaign.

The LFCC's audit committee for CFCNCA is fully engaged in oversight. As part of its responsibilities, the audit committee and LFCC approved the firm that conducts the audit of CFC records, disbursements, and finances.

Each month, the PCFO presents detailed written, verbal, and financial reports to the LFCC covering all aspects of campaign planning, implementation, accounting, recognition, and volunteer involvement. These reports track all regulatory milestones for CFC auditing, public reporting, and deadlines in order to meet all established regulatory requirements.

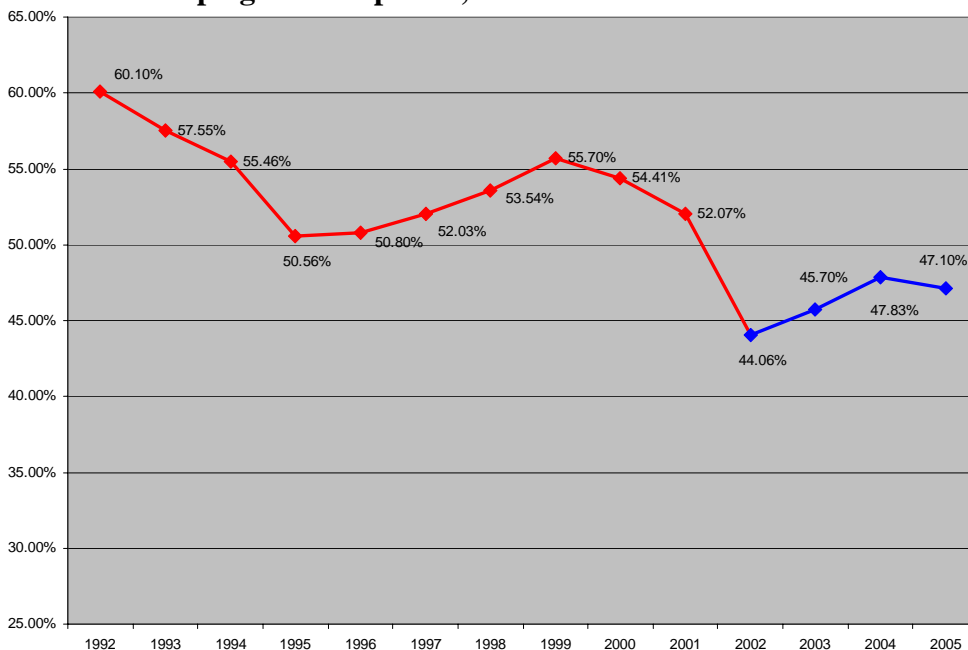
CFCNCA undergoes an audit by an independent public accounting (IPA) firm at the end of each distribution cycle. The IPA audit and the annual compliance audit are turned in to the LFCC in August and then provided to OPM for review in September.

Where Did the Money Come From?

Civilian workers in the executive, judicial, and legislative branches of government pledged \$40.6 million to CFCNCA. Uniformed and civilian employees of the Department of Defense accounted for pledges of \$15.3 million or 26 percent of total contributions to CFCNCA in 2005. Postal employees contributed \$1.7 million.

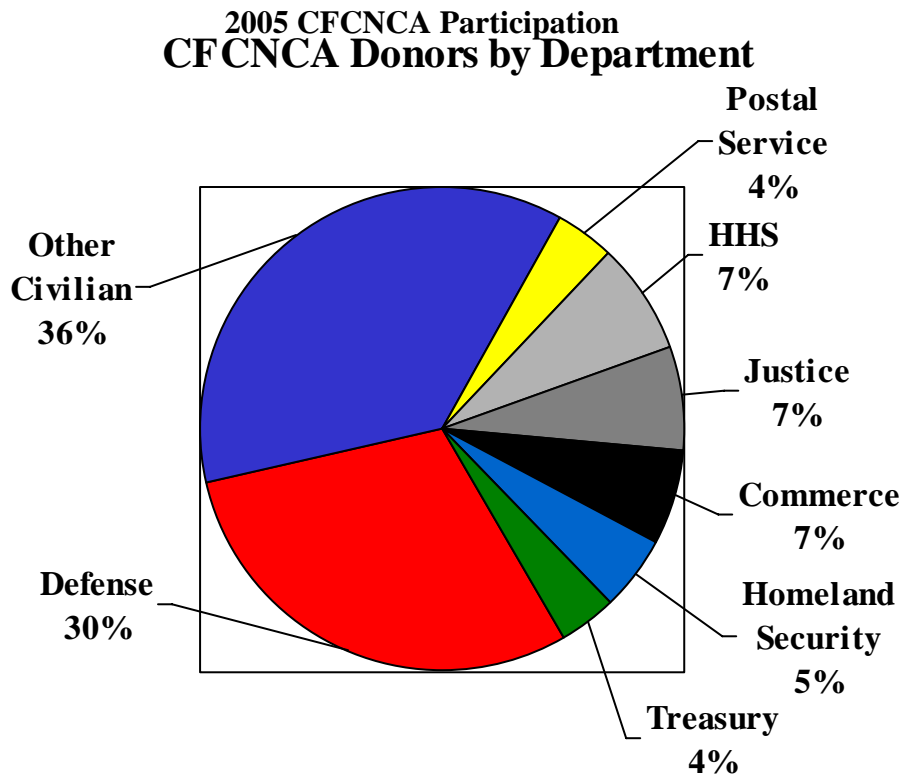
Participation in the campaign has stabilized after dropping dramatically from 1992 to 2002 before Global Impact management began. Participation is up to 166,410 contributors or 47.1 percent compared with the 32 percent national average.

CFCNCA Campaign Participation, 1992-2005



Since 2003, CFCNCA has increased its participation rate from 44 to just over 47 percent with 6,548 new donors over the three years.

Where Givers Work



Awards and Recognition

The CFC provides several awards to recognize various levels of contributions to the CFC within Federal Government agencies. Each award has its own criteria as indicated below.

Department/Agency Awards:

- **President's Award** – 75 percent employee participation or \$275 per capita gift
 - 575 winners
- **Chairman's Award** – 67 percent employee participation or \$225 per capita gift
 - 236 winners
- **Honor Award** – 60 percent employee participation or \$175 per capita gift
 - 200 winners
- **Merit Award** – 50 percent employee participation or \$125 per capita gift
 - 195 winner
- **Million Dollar Circle Award** – recognizes component units of departments and agencies that raise more than \$1 million in contributions
 - 22 winners

Central Intelligence Agency	Department of Labor
Defense Intelligence Agency	Department of the Navy/USMC
Department of Agriculture	Department of State
Department of the Air Force	Department of the Treasury
Department of the Army	Internal Revenue Service
Department of Commerce	Department of Transportation
Department of Defense	Environmental Protection Agency
Department of Energy	Food and Drug Administration
Department of Health & Human Services	National Institute of Health
Department of Homeland Security	Naval Sea Systems Command
Department of Justice	U.S. Patent and Trademark Office
	U.S. Postal Service

- **Summit Award** – given for achieving more than the previous year's results by three percent
 - 80 winners
- **Campaign Leadership Award** – 2 percent increase in contributions or a 2 percent increase in participation over previous year's results
 - 23 winners



Where Did the Money Go?

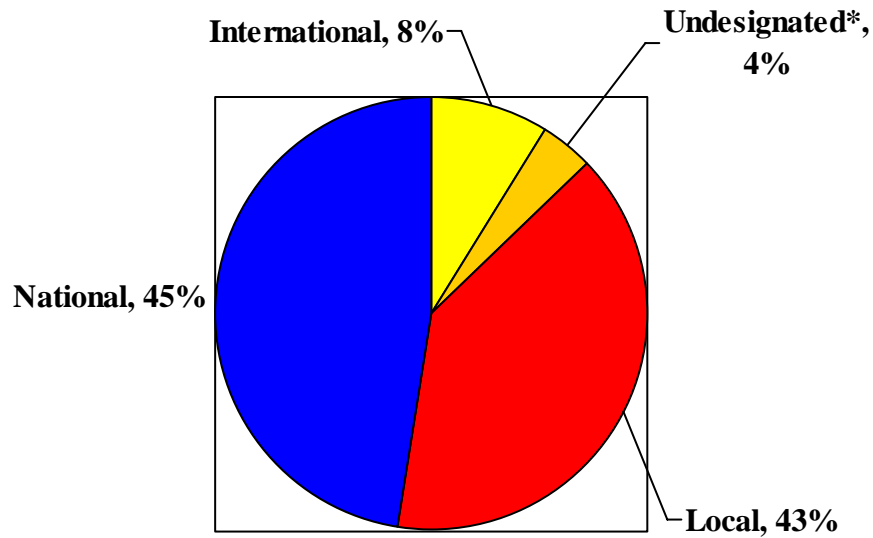
Gifts from the 2005 CFCNCA were designated by contributors to the following categories:

The largest share of the campaign was designated to national organizations. They will receive more than \$27.3 million (47.57 percent of the total campaign contributions). This is a 6.9 percent and \$1.9 million increase over the gifts to national charities in 2004.

Local organizations will receive more than \$22.9 million (42.54 percent). This included almost \$15 million (65.5 percent) to the United Way of the National Capital Area, the largest federation in the campaign, and its member organizations.

International charities will share \$5.07 million in CFCNCA gifts (7.76 percent of the total campaign).

2006 CFCNCA Designations



*Approximately \$2.29 million (3.97 percent of overall gifts) were not designated to a specific charity. According to CFC guidelines, these funds will be shared proportionately among all charities receiving designations.

The following is a detailed listing of pledges designated to major federations.

Federation	2004	2005	Percent Change
America's Charities	\$1,130,095	\$898,297	-25.80%
American Red Cross	\$1,274,736	\$3,148,447	59.51%
Animal Charities of America	\$1,414,087	\$1,312,622	-7.73%
CancerCURE America		\$1,173,597	100.00%
Children First - America's Charities	\$440,499	\$521,895	15.60%
Children's Charities of America	\$1,386,910	\$1,475,148	5.98%
Christian Charities USA	\$470,640	\$632,389	25.58%
Christian Service Charities	\$1,966,764	\$1,886,539	-4.25%
Community Health Charities	\$4,400,718	\$4,062,529	-8.32%
Conservation & Preservation Charities of America	\$749,059	\$615,129	-21.77%
Earth Share	\$1,375,184	\$1,463,468	6.03%
Educate America!	\$211,724	\$173,052	-22.35%

Health & Medical Research Charities of America	\$2,998,022	\$2,051,033	-46.17%
Health First - America's Charities		\$295,704	100.00%
Hispanic United Fund	\$138,133	\$112,817	-22.44%
Human & Civil Rights Organizations of America	\$354,515	\$291,043	-21.81%
Human Care Charities of America	\$397,070	\$500,227	20.62%
Human Service Charities of America	\$378,819	\$291,807	-29.82%
Jewish Charities of America		\$93,974	100.00%
Medical Research Agencies	\$1,160,993	\$1,029,392	-12.78%
Military, Veterans & Public Services Organizations of America	\$1,393,983	\$1,609,525	13.39%
National Black United Federation of Charities	\$277,561	\$237,005	-17.11%
National Unaffiliated Agencies	\$2,144,418	\$2,728,262	21.40%
Sports Charities USA Federation	\$62,419	\$53,518	-16.63%
The Arts Federation	\$30,086	\$45,495	33.87%
USO (United Service Organization)	\$155,499	\$214,612	27.54%
Women, Children and Family Service Charities of America	\$552,002	\$438,449	-25.90%
Total for National Organizations	\$25,538,932	\$27,355,975	6.64%
Aid to Africa	\$112,755	\$159,202	29.17%
Ayuda: Help for Latin America		\$50,404	100.00%
Do Unto Others	\$589,745	\$542,666	-8.68%
Global Impact	3,364,178	\$3,629,299	7.31%
International General Designation Option (III)	\$3,119	\$4,124	24.37%
International Unaffiliated Agencies	\$276,230	\$627,350	55.97%
Tzedakah-Israel		\$57,606	100.00%
Total For International Organizations	\$4,346,027	\$5,070,650	14.29%
Local Unaffiliated Agencies	\$4,825,174	\$4,958,104	2.68%
Local United Way Agencies	\$18,014,902	\$16,833,401	-7.02%
Other Local Federations	\$971,517	\$1,115,145	12.88%
Total for Local Organizations	\$23,811,593	\$22,906,650	-3.95%
Undesignated Contributions	\$2,284,305	\$2,286,553	0.10%
Grand Total	\$55,980,857	\$57,619,828	2.84%

Top 25 Charities in CFCNCA

American Red Cross	\$3,148,447.00
So Others Might Eat, Inc.	\$947,607.92
American Cancer Society	\$916,711.11
St. Jude Children's Research Hospital	\$640,304.45
Catholic Relief Services	\$626,530.05
Whitman-Walker Clinic, Inc.	\$574,261.07
United Negro College Fund	\$502,522.89
Salvation Army World Service Office (SAWSO)	\$436,456.67
Children's Hospital Foundation	\$405,087.30
American Heart Association	\$397,298.34
House of Ruth	\$365,213.09
Alzheimer's Research Federation, Fisher Center	\$359,299.32
Fisher House Foundation	\$351,470.42
Feed the Children	\$343,686.36
CARE	\$334,467.80
Martha's Table/Mckenna's Wagon	\$331,976.62
WETA	\$323,533.93
The Catholic Charities of the Diocese of Arlington	\$321,555.64
The Susan B. Komen Breast Cancer Foundation	\$313,532.64
The Nature Conservancy	\$305,548.58
WAMU – American University	\$288,257.34
Catholic Charities of the Archdiocese of Washington	\$278,194.35
Capital Area Food Bank, Inc.	\$266,266.47
Habitat for Humanity International	\$256,710.29

Based on Total Designations

2006 Campaign

As one campaign ends, another begins.

The 2006 Campaign application process is nearing completion. The total number of participating charities in the 2006 CFCNCA *Catalog of Caring* may vary slightly from the totals below.

Federation	Charities
United Way of Central Maryland, Inc.	54
United Way of Berkeley and Morgan Counties, WV, Inc.	21
United Way of Calvert County, Inc.	18
Local Unaffiliated Organizations	560
Institute for Black Charities Federation	25
United Way of Frederick County, Inc.	16

Rappahannock United Way, Inc.	28
United Way of Jefferson County, WV, Inc.	16
Community Health Charities of the National Capital Area, Inc.	27
United Way of the Northern Shenandoah Valley	21
Piedmont United Way, Inc.	19
United Way of the National Capital Area	596
United Way of St. Mary's County, Inc.	29
Charitable Alliance	45
Environmental Fund for Maryland, Inc.	20
United Way of Charles County, Inc.	23
Total Local Listing	1,518