



Combined Federal Campaign of the National Capital Area

MANAGE

2011 LE TRAINING

OPM Innovator Award Recipient 2003-2010

Agenda

2

- What is MANAGE?
- Access Control
- Reporting Units
- System Demo

What is MANAGE?

3

MANAGE is a web application used by campaign staff and volunteers to...

- Order campaign **supplies**
- Schedule charity **outreach** requests
- Make **deposits**
- Track fundraising progress with **reports**
- Order campaign **awards**

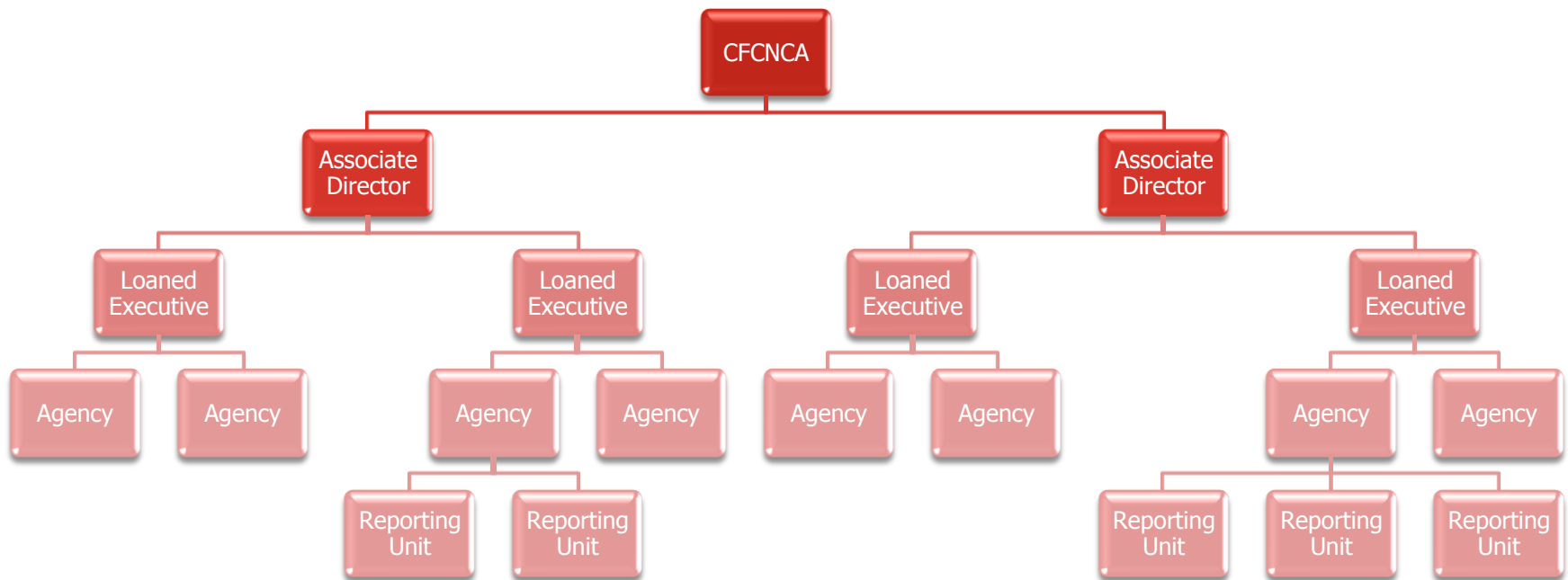
MANAGE Access Control

4

- You are only given as much access as is required by your role
- Access is controlled in two ways...
 - **Campaign Structure** – limits access to a specific accounts based on agency and role
 - **User & Group Permissions** – limits access to a specific set of pages and actions

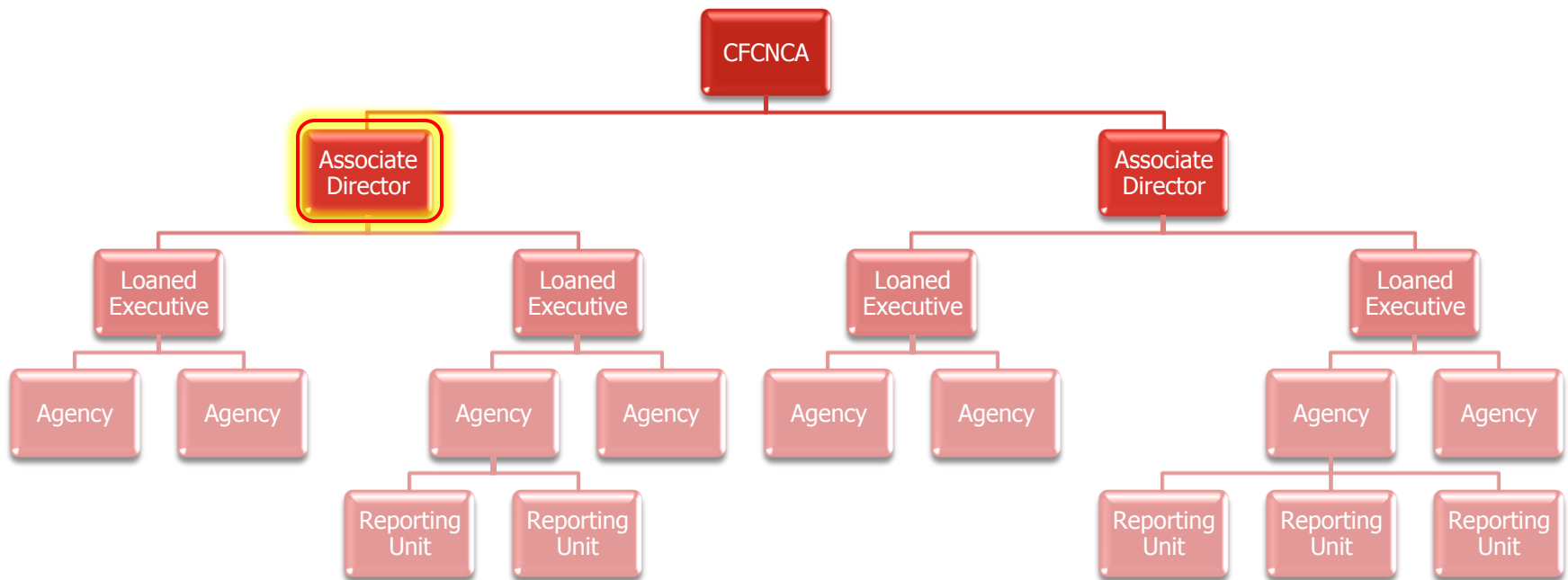
Campaign Structure

5



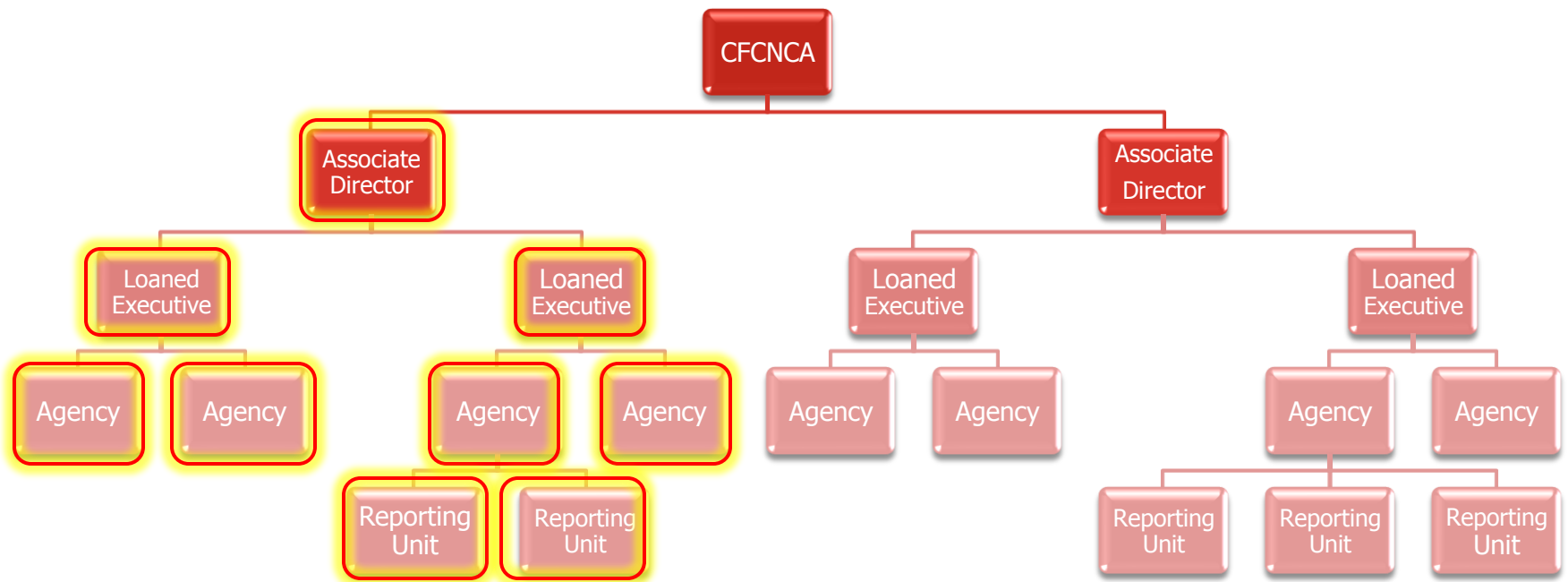
Campaign Structure

6



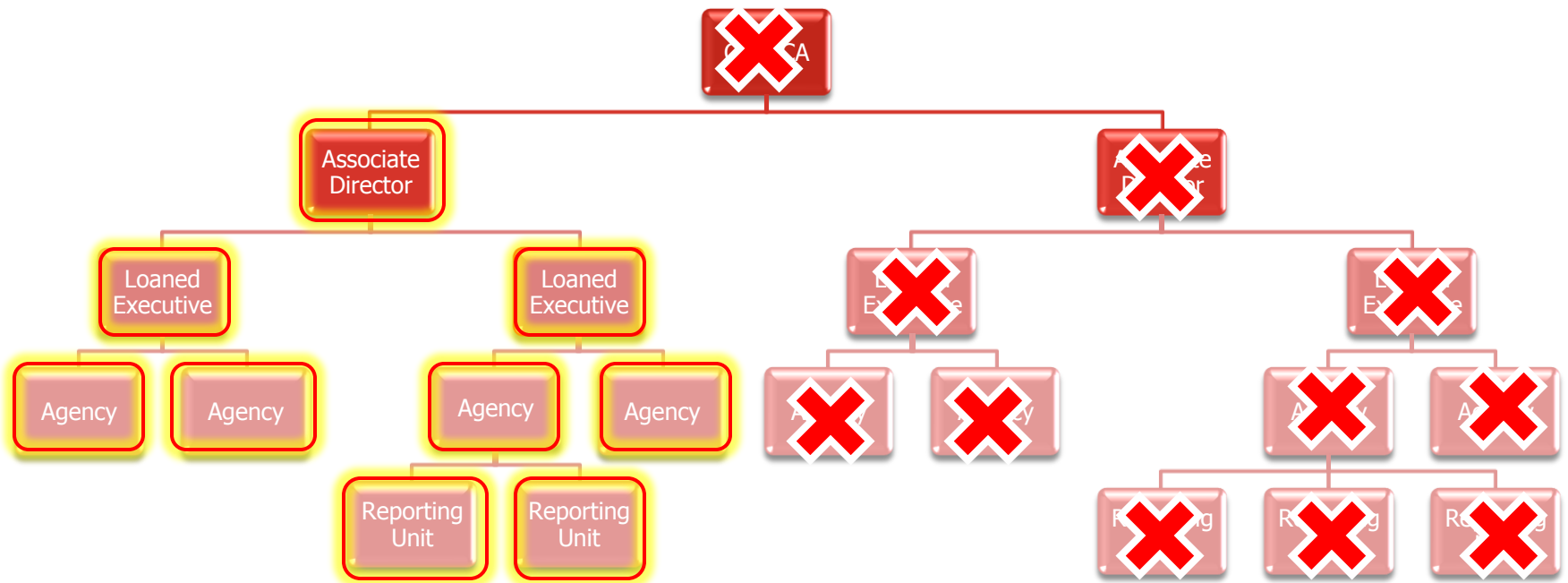
Campaign Structure

7

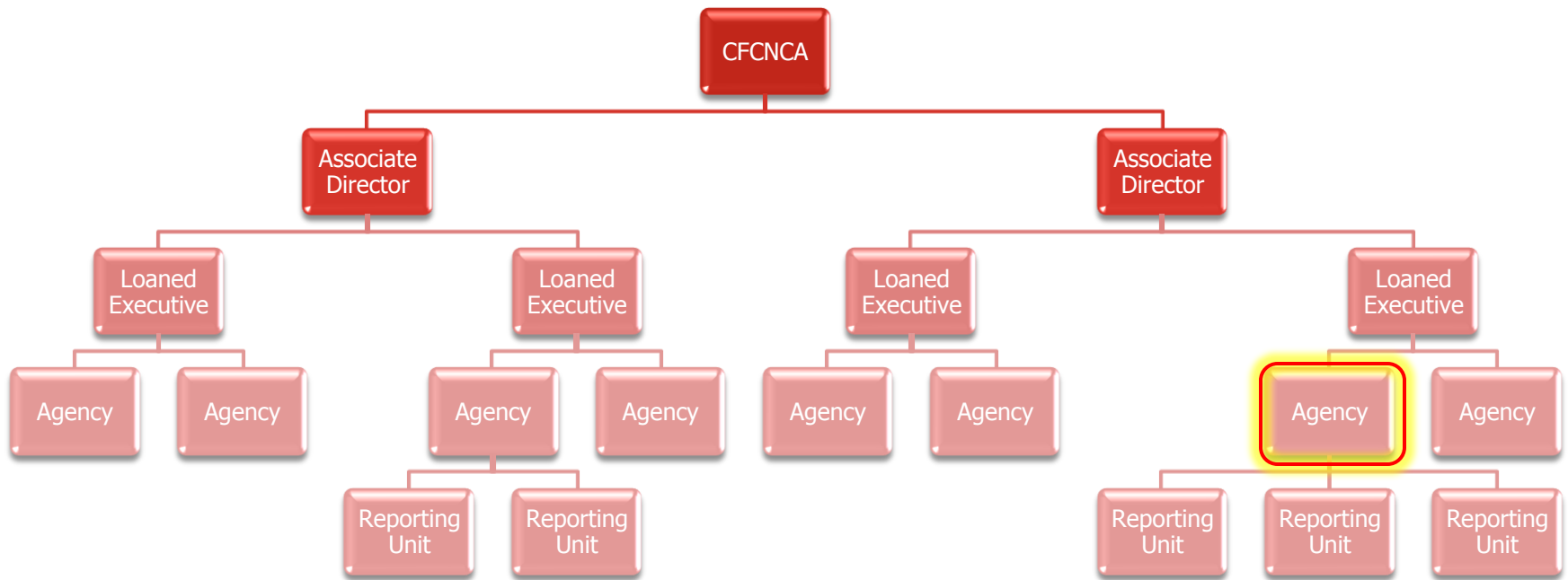


Campaign Structure

8

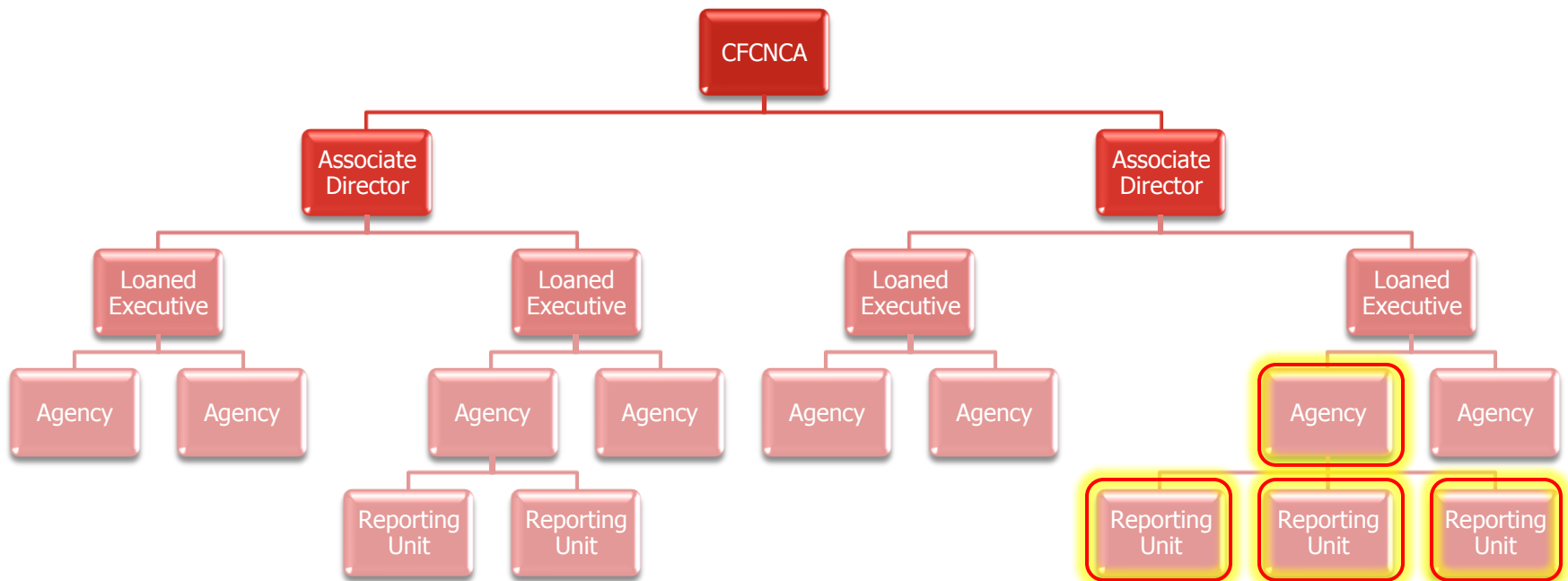


Campaign Structure



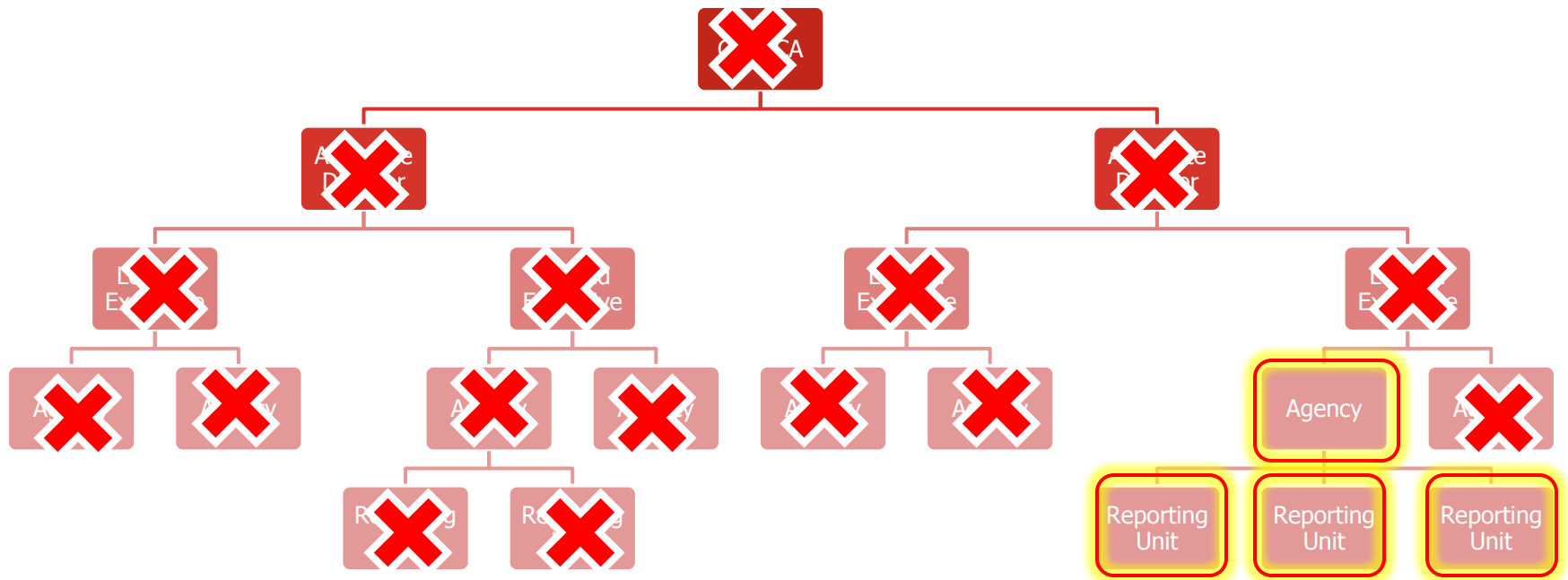
Campaign Structure

10



Campaign Structure

11



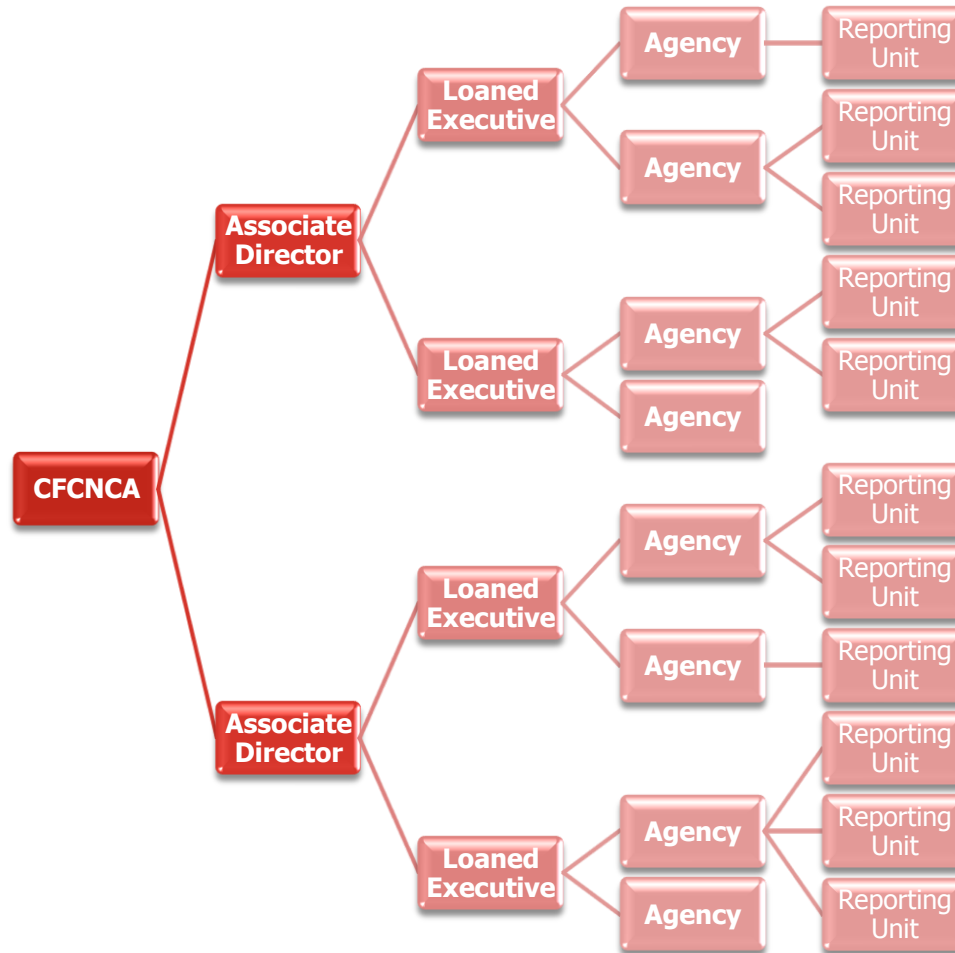
User & Group Permissions

12

- Campaign Manager
- Campaign Coordinator
- Keyworker

Reporting Units

13



MANAGE Access

14

- How do I access MANAGE?
 - Visit www.cfcnca.org
 - Click on CFCNCA MANAGE
 - Click on Login to MANAGE
- Access to MANAGE will be given by early September

15

MANAGE Demo